




ECLISSE
BEAUTIFUL GLASS DOORS

FRAMELESS GLASS POCKET DOORS | FRAMELESS GLASS HINGED DOORS | ALUMINIUM FRAMED GLASS DOORS
VETROGLIDE - SURFACE MOUNTED GLASS DOOR



 View online at : www.eclisse.co.uk

 Enquiries and order line: 0845 4811977

INTRODUCTION	4
GLASS FINISHES	5
DOOR STYLES	12
GLASS DOOR FRAMES AND SYSTEMS	15
Classic Pocket Door System + 8 mm Frameless Glass Door	16
Classic Pocket Door System + 10 mm Frameless Glass Door	17
Classic Pocket Door System + Aluminium Framed Glass Door	18
Syntesis® Flush Pocket Door System + 10 mm Frameless Glass Door	19
Syntesis® Flush Pocket Door System + Aluminium Framed Glass Door	20
Syntesis® Flush Hinged Frame + Frameless Glass Door	21
VETROGLIDE - Surface Mounted Sliding Glass Door	22
GLASS DESIGN OPTIONS	23
Aree - Sandblasted designs	25
Flores - Sandblasted designs	29
Tozzetti – Sandblasted designs with Murano tile inserts for 10 mm glass	32
Opere - Hand painted designs for 10 mm glass	33
Colours - For 10 mm glass	34
Mirrored - For 10 mm glass	35
ACCESSORIES	37
Handles and Locks	38
Soft-Close Systems	39
TECHNICAL SPECIFICATIONS AND SIZING	41
Classic Glass Pocket Door Single	42
Classic Glass Pocket Door Double	43
Syntesis® Flush Glass Pocket Door Single	44
Syntesis® Flush Glass Pocket Door Double	45
Aluminium Framed Classic Glass Pocket Door	46
Aluminium Framed Syntesis® Flush Glass Pocket Door	47
Syntesis® Flush Glass Hinged Door	48

MORE THAN JUST A DOOR IT'S A WORK OF ART



FRAMELESS GLASS POCKET DOORS - PLAIN SATIN AND SANDBLASTED DESIGN ON SATIN

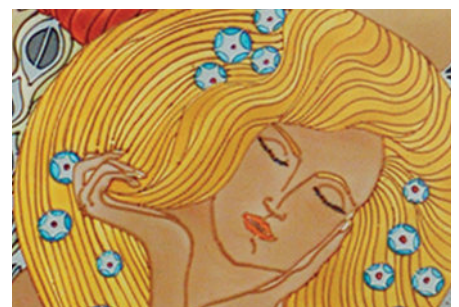
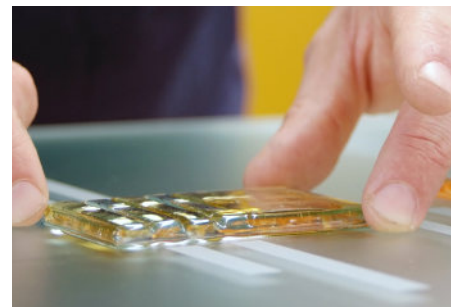
At ECLISSE we are passionate about design and innovation. We are constantly looking for ways to meet our customers' needs by developing our product ranges and introducing new innovative door systems. It is this desire to provide our customers with high quality, beautiful products that has inspired us to create the GLASS DOOR COLLECTION.

Glass is incredibly versatile; it can be fashioned to create a design statement, whilst at the same time dividing and creating different spaces and allowing light in.

Beautifully combining function and artistry, our GLASS DOOR COLLECTION marries the reliability and innovative design of ECLISSE pocket door systems and ECLISSE flush hinged doorframes with KARIS glass doors.

KARIS, based in the Veneto region of Italy, have been producing decorative glass products for over 25 years. Constant research and an obsessive attention to detail has resulted in a high quality product. The glass used for the doors is produced using a modern production technique called the float process, which results in a perfectly smooth surface, which is then tempered for maximum safety.

The process KARIS use for adding design, decoration and embellishment onto the glass is highly skilled process performed by hand and not the result of mass production. The result is more than just a door; it is a work of art. Design possibilities multiply and layout possibilities increase when a KARIS glass door is combined with an ECLISSE pocket door system or ECLISSE flush hinged door frame.



GLASS FINISHES TRANSPARENT OR SATIN GLASS



TRANSPARENT GLASS & LOW IRON

Standard transparent glass has a characteristic slight green tinge to its edge. Low iron glass is perfectly transparent with no hint of colour.

SATIN GLASS & LOW IRON

Satin glass is acid etched glass that is polished for an easy-clean finish. Satin glass allows light through but obscures what you can see. Low iron satin glass, is low iron transparent glass that has been acid etched. So like low iron transparent glass it does not have slight green tinge to its edge.



TRANSPARENT



TRANSPARENT LOW IRON



SATIN



SATIN LOW IRON

MORE ABOUT SATIN GLASS

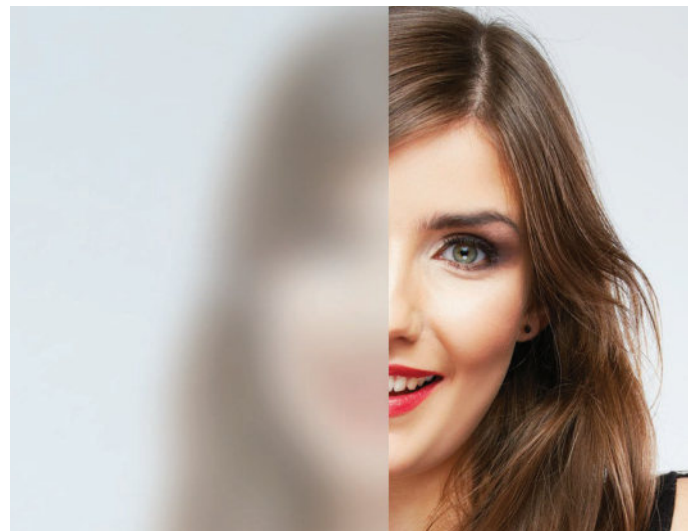
OPACITY

The further away objects are from the glass the more opaque it becomes. It is ideal for en-suites, utilities and most glass door situations except for family bathrooms where we would recommend sandblasting both sides or opting for a solid coloured laminate for complete privacy.

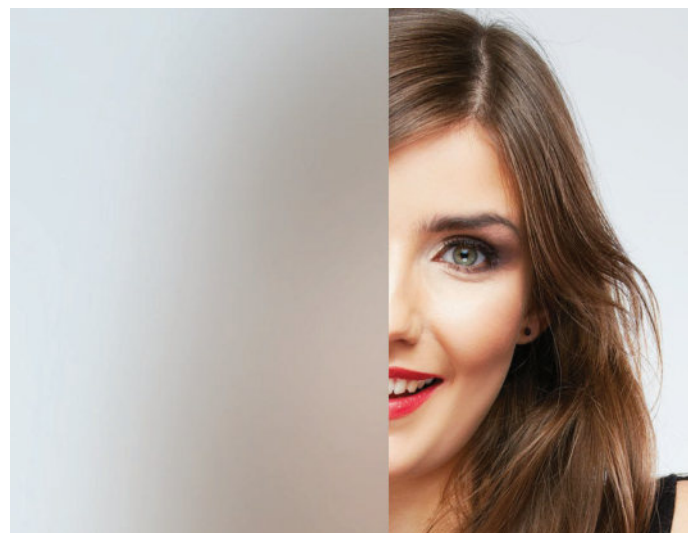
10 CM (4 INCHES)
FROM THE GLASS



30 CM (12 INCHES)
FROM THE GLASS



100 CM (40 INCHES)
FROM THE GLASS



SATIN AND TRANSPARENT GREY AND BRONZE

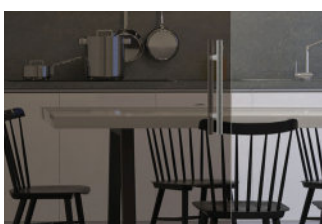


TRANSPARENT GREY OR BRONZE

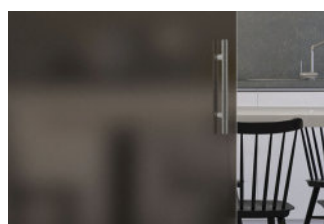
There is an elegant appeal to a transparent grey or bronze frameless glass door panel. The grey or bronze tint gives the glass its smoked appearance and reduces the amount of light that passes through, but you can still see through it.

SATIN GREY OR BRONZE

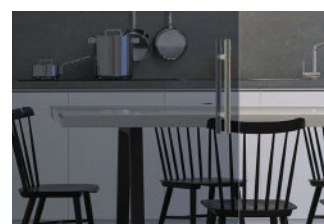
The satin grey and satin bronze is more obscure than its transparent counterparts.



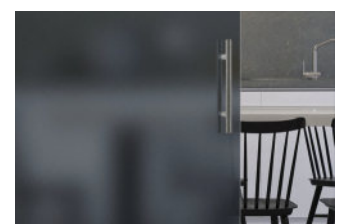
TRANSPARENT BRONZE



SATIN BRONZE



TRANSPARENT GREY



SATIN GREY

SANDBLASTED PATTERNS



SANDBLASTED PATTERN ON SATIN - FRAMELESS GLASS

SANDBLASTING ONTO TRANSPARENT OR SATIN GLASS

During sandblasting the door is covered with a mask except for the areas which require the design. The areas that are exposed to the sandblasting become more opaque than the satin base. The door is then given an anti-marking treatment.

PATTERNS ON DOUBLE POCKET DOORS

Some patterns for double pocket doors have a pattern on the left door and then a mirror image of that pattern on the right door. Other patterns like HAKA CHA, shown on the right, flow across both doors to make one whole image when the doors are closed.

ADD YOUR OWN DESIGN

If you have a design of your own that you would like to add to a glass door just call us! We can accommodate most requests.



HAKA CHA DESIGN



JUNGLE DESIGN ON TRANSPARENT BRONZE

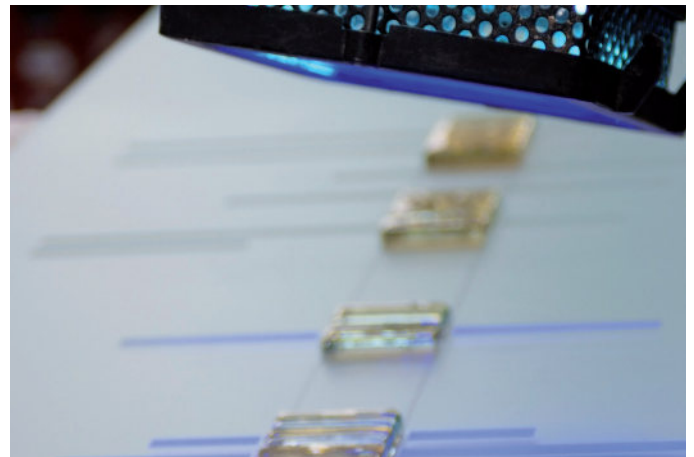
MURANO GLASS TILES OR "TOZZETTI"



MURANO GLASS TILES OR "TOZZETTI"

Colourful Murano glass tiles or "tozzetti", are highly decorative hand-cut glass tiles added to a sandblasted design resulting in elegant and individualistic glass door oozing with Italian style.

The tozzetti are UV bonded to the glass door resulting in an incredibly strong bond that is imperceptible to the eye, resulting a seamless design enhanced with colour and texture.



HAND PAINTED DESIGNS



HAND PAINTED DESIGNS

Every stunning hand painted glass panel is a unique piece created entirely by hand involving many days of work by KARIS artisans.

The combination of the stunning hand painted glass panel and the high quality ECLISSE pocket door frame results in a door that is both functional, and also a unique, hand-crafted piece of art.



COLOURED AND MIRRORED



SATIN GLASS

Satin coloured glass doors have a light film of colour sprayed onto transparent glass to give it a translucent coloured glass finish. One side is smooth, the reverse is matt. Satin coloured glass doors let light shine through.

SOLID COLOUR

A single sheet of 10 mm glass with a RAL colour of your choice sprayed on the reverse side of a sheet of 10 mm transparent glass. The result is an impactful, colourful glass door. One side is smooth, the reverse is matt. Suitable for areas where the appearance of the reverse side is less important.

LAMINATED SOLID COLOUR

A laminated glass door made up from two sheets of 5 mm tempered glass that sandwich a solid RAL colour film. This allows you to have a different colour on each side for a truly unique impactful door.

MIRRORED GLASS DOORS

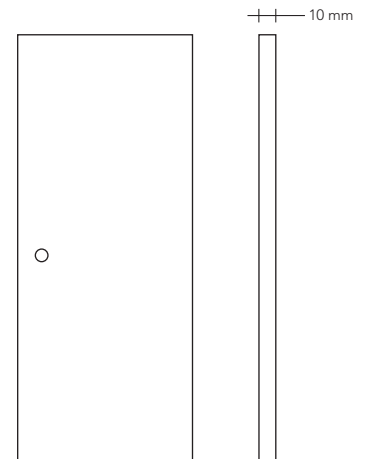
This is a variation of the laminated solid colour glass door where both 5 mm tempered sheets of glass laminated together have a mirrored surface. It is possible to have mirrored one side and a solid colour the other.



FRAMELESS GLASS

FRAMELESS GLASS DOOR

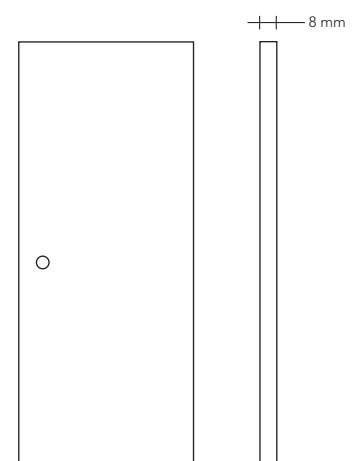
10 mm



There are so many design choices and sizes to choose from in the 10 mm range of tempered glass frameless doors you will be spoiled for choice! Available in a vast range of designs and colours, the 10 mm frameless glass doors, can be combined with a wide range of handle designs and also locks. The 10 mm frameless glass doors can also be used with both the Classic (requires architrave) and Syntesis® Flush (no architrave) pocket door systems.

FRAMELESS GLASS DOOR

8 mm

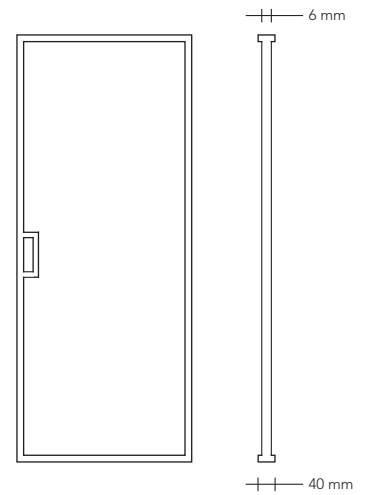


Tempered to the latest European standards, the single and double 8 mm glass door range is a great way to maximise light and space in your property. The plain satin 8 mm glass door, which combines with an ECLISSE Classic Pocket Door System (i.e. requires finishing with architrave), has a nominal door panel size of either 762 x 1981 or 826 x 2040 mm; the striped satin glass door has a nominal door panel size of 762 x 1981 mm. The doors come with glass oblong handle as standard.

ALUMINIUM FRAMED GLASS

ALUMINIUM FRAMED GLASS DOOR

6 mm GLASS IN A 40 mm ALUMINIUM FRAME



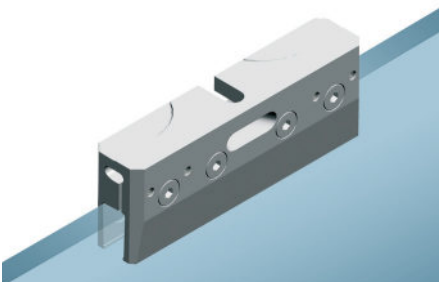
6 mm tempered KARIS glass (transparent, satin, milk white, bronze, grey and sandblasted patterns) in an aluminium frame with integral aluminium handle.

GLASS DOOR FRAMES AND SYSTEMS



CLASSIC POCKET DOOR SYSTEM + 8 mm FRAMELESS GLASS DOOR

Plain satin 8 mm glass door or 8 mm striped glass door combined with an ECLISSE Classic Pocket Door System (requires architrave). Single and double versions are available.
The 8 mm glass door is top hung via strong clamps.



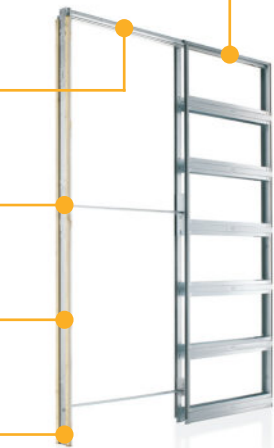
RUNNERS TESTED TO 100.000 CYCLES OF OPENING AND CLOSING

EXTRACTABLE TRACK

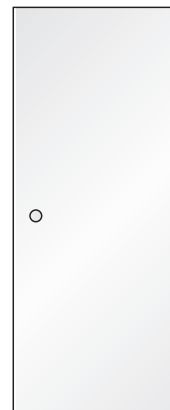
QUICK-CLICK EASY TO ASSEMBLE FRAME

STRONG GALVANIZED STEEL FRAME

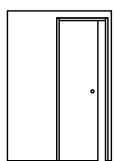
CORROSION RESISTANT



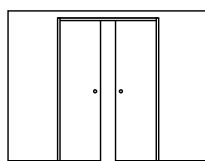
ECLISSE CLASSIC POCKET DOOR FRAME



KARIS 8 mm FRAMELESS GLASS DOOR



SINGLE POCKET



DOUBLE POCKET

GLASS FINISHES AVAILABLE

SATIN
nominal door panel size of 762 x 1981 or 826 x 2040 mm

SATIN WITH STRIPES
nominal door panel size of 762 x 1981 mm

* Clamps, timber lining kit, runners, fixings and door guide

Note: Door comes with oblong glass handle as standard therefore door cannot be adjusted to be flush with the pocket.

CLASSIC POCKET DOOR SYSTEM + 10 mm FRAMELESS GLASS DOOR

The ECLISSE Classic Pocket Door System has a timeless elegance suitable for traditional and modern interiors. Combine this with a KARIS 10 mm frameless glass door for a space saving and space changing alternative to a traditional hinged door. The frameless glass door is top hung from super strong dovetail clamps.



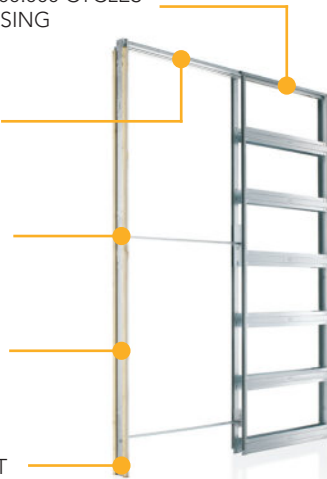
RUNNERS TESTED TO 100,000 CYCLES OF OPENING AND CLOSING

EXTRACTABLE TRACK

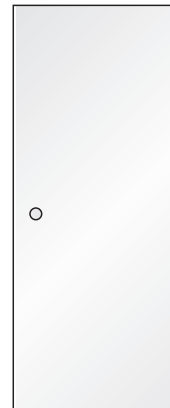
QUICK-CLICK EASY TO ASSEMBLE FRAME

STRONG GALVANIZED STEEL FRAME

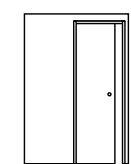
CORROSION RESISTANT



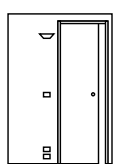
ECLISSE CLASSIC POCKET DOOR FRAME



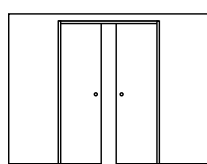
KARIS 10mm FRAMELESS GLASS DOOR



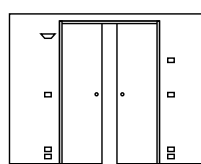
SINGLE POCKET



SINGLE POCKET (WIRING-READY)



DOUBLE POCKET



DOUBLE POCKET (WIRING-READY)

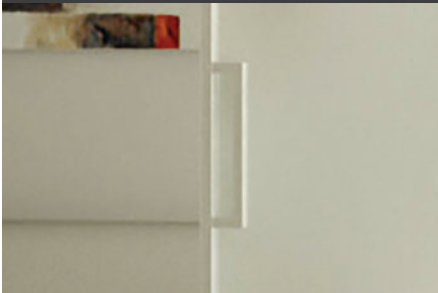
GLASS FINISHES AVAILABLE

- TRANSPARENT
- TRANSPARENT LOW IRON
- SATIN
- SATIN LOW IRON
- TRANSPARENT or SATIN GREY
- TRANSPARENT or SATIN BRONZE
- SANDBLASTED PATTERNS
- COLOURED (SOLID or SATIN)
- MIRRORED
- HANDPAINTED

* Dovetail clamps, timber lining kit, runners, fixings and door guide

CLASSIC POCKET DOOR SYSTEM + ALUMINIUM FRAMED GLASS DOOR

A KARIS aluminium framed 6 mm tempered glass door is top hung from an ECLISSE Classic Pocket Door System to make a stylish interior design statement.



RUNNERS TESTED TO 100.000 CYCLES OF OPENING AND CLOSING

EXTRACTABLE TRACK

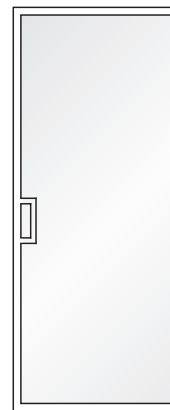
QUICK-CLICK EASY TO ASSEMBLE FRAME

STRONG GALVANIZED STEEL FRAME

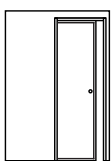
CORROSION RESISTANT



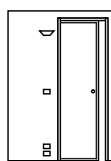
**ECLISSE CLASSIC
POCKET DOOR FRAME**



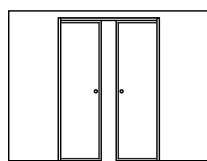
**KARIS ALUMINIUM
FRAMED GLASS DOOR**



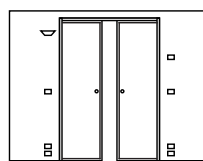
SINGLE POCKET



SINGLE POCKET
(WIRING-READY)



DOUBLE POCKET



DOUBLE POCKET
(WIRING-READY)

GLASS FINISHES
AVAILABLE

- TRANSPARENT
- SATIN
- MILK WHITE
- BRONZE
- GREY
- SANDBLASTED PATTERNS

* Timber lining kit, runners, fixings and door guide

SYNTESIS® FLUSH POCKET DOOR SYSTEM + 10 mm FRAMELESS GLASS DOOR

The ECLISSE Syntesis® Flush Pocket Door System is architrave free perfect for a contemporary interior. The flush (i.e. architrave free) finish of the wall surrounding the door is achievable thanks to the innovative edge profile of the reinforced frame.

The 10 mm frameless glass door is top hung from a super strong bonded bracket.



RUNNERS TESTED TO 100.000 CYCLES OF OPENING AND CLOSING

REINFORCED CORNERS

EXTRACTABLE TRACK

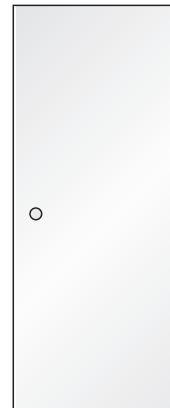
STRONG FRAME

INNOVATIVE EDGE PROFILE

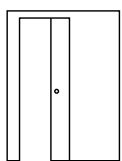
QUICK-CLICK EASY TO ASSEMBLE FRAME

CORROSION RESISTANT

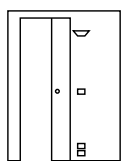
ECLISSE SYNTESIS® FLUSH POCKET DOOR FRAME



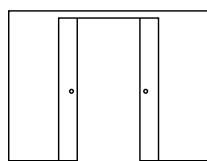
KARIS 10mm FRAMELESS GLASS DOOR



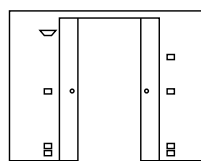
SINGLE POCKET



SINGLE POCKET (WIRING-READY)



DOUBLE POCKET



DOUBLE POCKET (WIRING-READY)

GLASS FINISHES AVAILABLE

- TRANSPARENT
- TRANSPARENT LOW IRON
- SATIN
- SATIN LOW IRON
- TRANSPARENT or SATIN GREY
- TRANSPARENT or SATIN BRONZE
- SANDBLASTED PATTERNS
- COLOURED (SOLID or SATIN)
- MIRRORED
- HANDPAINTED

* Vitro kit, runners, fixings and door guide

SYNTESIS® FLUSH POCKET DOOR SYSTEM + ALUMINIUM FRAMED GLASS DOOR

6 mm tempered KARIS glass (transparent, satin, milk white, or bronze) in an aluminium doorframe combined with an ECLISSE Syntesis® Flush Pocket Door System (i.e. architrave free).

The frameless glass door is top hung from a super strong bonded bracket.



RUNNERS TESTED TO 100.000 CYCLES OF OPENING AND CLOSING

REINFORCED CORNERS

EXTRACTABLE TRACK

STRONG FRAME

INNOVATIVE EDGE PROFILE

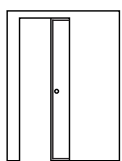
QUICK-CLICK EASY TO ASSEMBLE FRAME

CORROSION RESISTANT

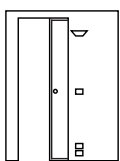
ECLISSE SYNTESIS® FLUSH POCKET DOOR FRAME



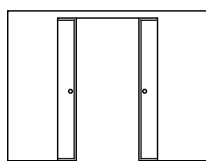
KARIS ALUMINIUM FRAMED GLASS DOOR



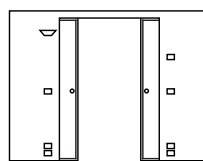
SINGLE POCKET



SINGLE POCKET (WIRING-READY)



DOUBLE POCKET



DOUBLE POCKET (WIRING-READY)

GLASS FINISHES AVAILABLE

- TRANSPARENT
- SATIN
- MILK WHITE
- BRONZE
- GREY
- SANDBLASTED PATTERNS

* Timber lining kit, runners, fixings and door guide

SYNTESIS® FLUSH HINGED FRAME + FRAMELESS GLASS DOOR

8 mm tempered KARIS glass doors combined with an ECLISSE Syntesis® Flush Hinged Frame (door is recessed but has no architrave).

The door is supported by a vertical anodised aluminium trim, while the hinges, completely hidden, ensure stability and load even for particularly large doors.



STRONG BOX
CROSS SECTION

INNOVATIVE EDGE
PROFILE FOR CRISP
PLASTER FINISH

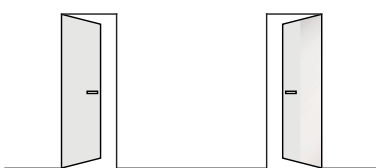
CAN BE INSTALLED
INTO METAL OR WOOD
STUD OR INTO MASONRY

CORROSION
RESISTANT FRAME

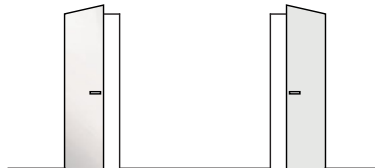


**ECLISSE SYNTESIS® FLUSH
HINGED DOOR FRAME**

**KARIS 8mm FRAMELESS
GLASS DOOR**



PUSH - LEFT and RIGHT



PULL - LEFT and RIGHT

GLASS FINISHES
AVAILABLE

- TRANSPARENT
- TRANSPARENT LOW IRON
- SATIN
- SATIN LOW IRON
- TRANSPARENT GREY
- SATIN GREY
- TRANSPARENT BRONZE
- SATIN BRONZE
- SANDBLASTED PATTERNS

* Seals, magnetic door latch, strike plate, vertical anodised trim - Handle not included

VETROGLIDE SURFACE MOUNTED SLIDING GLASS DOOR

VETROGLIDE is a range of surface mounted sliding glass doors for situations where you can't use a pocket door.

The stainless steel track is available with a variety of hanging methods and an 8 mm tempered satin KARIS glass door.

Photos below details all of the options available.



TRACK

2 m stainless steel

GLASS DOOR

KARIS 8 mm satin
900 x 2050 mm

HANDLE

58 mm round door flush pull handle,
satin stainless steel



TRACK

2 m stainless steel

GLASS DOOR

KARIS 8 mm satin
900 x 2050 mm

HANDLE

400 mm long stainless steel bar
handle



TRACK

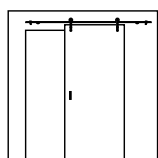
2.1 m stainless steel

GLASS DOOR

KARIS 8 mm satin
950 x 2200 mm

HANDLE

58 mm round door flush pull handle,
satin stainless steel



GLASS FINISHES AVAILABLE | SATIN

GLASS DESIGN OPTIONS



YOUR PERFECT DESIGN

There are a myriad of frameless glass designs to choose from. Opt for the simple beauty of a transparent, satin, or smoked glass door with no decoration or peruse the wide range of sandblasted patterns on a transparent, satin or smoked glass that we have to offer. If instead you are looking to energise your interior with colour have a look at the coloured and mirrored glass options and of course the strikingly beautiful hand painted designs.

WITHOUT DECORATION



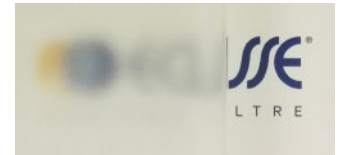
TRANSPARENT



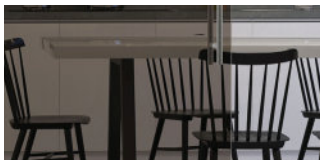
TRANSPARENT LOW IRON



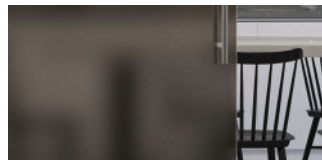
SATIN



SATIN LOW IRON



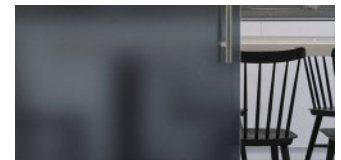
TRANSPARENT BRONZE



SATIN BRONZE



TRANSPARENT GREY



SATIN GREY

WITH DECORATION



AREE COLLECTION

Sandblasted designs influenced by the flow and arrangement of lines, patterns and shapes on a transparent, satin or smoked base.



FLORES COLLECTION

Sandblasted designs inspired by nature on a transparent, satin or smoked base.



TOZZETTI COLLECTION

Sandblasted patterns incorporating colourful murano tiles or tozzetti on a transparent, satin or smoked base.



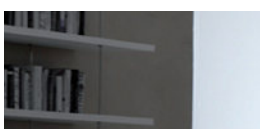
OPERE COLLECTION

Striking hand painted patterns and designs on a transparent or satin base.



COLORS COLLECTION

A RAL colour sprayed on a sheet of 10 mm transparent glass, for an impactful, colourful glass door: one side is smooth, the reverse is matt. Alternatively two sheets of 5 mm tempered glass can sandwich a RAL coloured film for a strikingly coloured glass door and a smooth finish on both sides.



MIRRORED

A sheet of mirrored glass, which can be laminated with another sheet of mirrored glass or with a sheet of solid coloured glass.

AREE

ON A TRANSPARENT, SATIN, GREY OR BRONZE BASE WITH SANDBLASTED DECORATION

TRAMA



RIGHE 1



AVALON



FIREWORKS



CRASH



Suitable for all systems except for 8 mm Classic Pocket Door Systems.

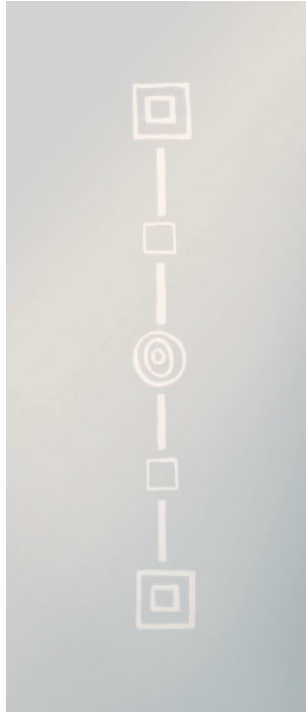
AREE

ON A TRANSPARENT, SATIN, GREY OR BRONZE BASE WITH SANDBLASTED DECORATION

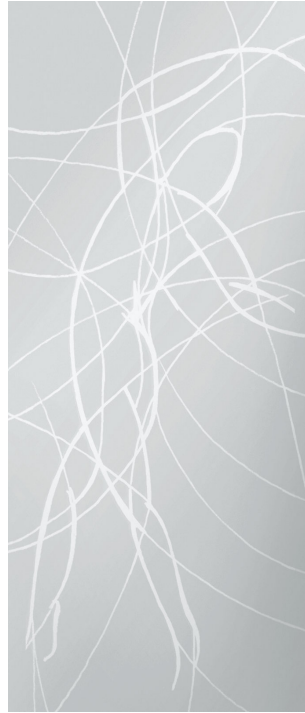
LABIRINTO



GEO



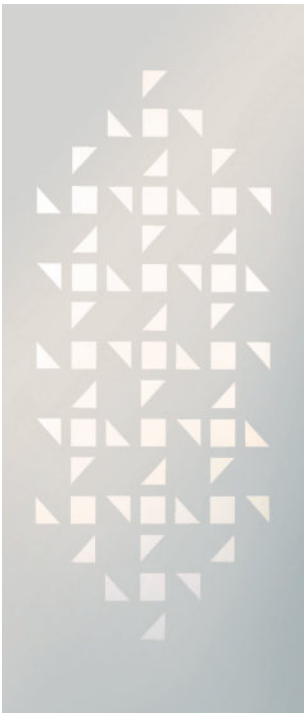
HAYLIN



MACHU PICCHU



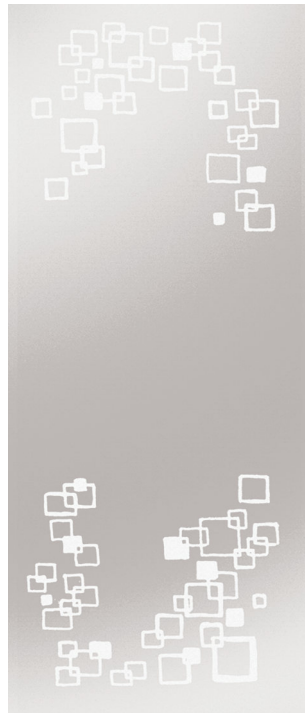
QUATRY



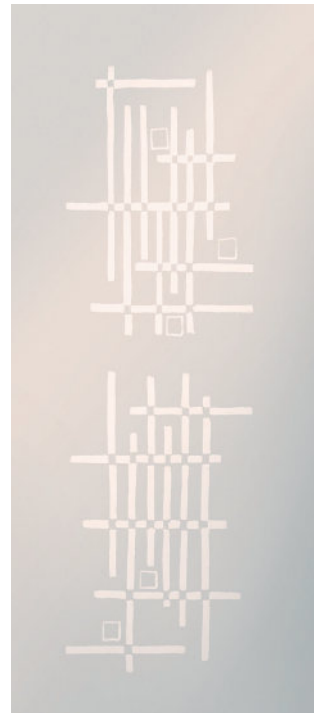
TATTOO



RIFLESSI



DEDALO

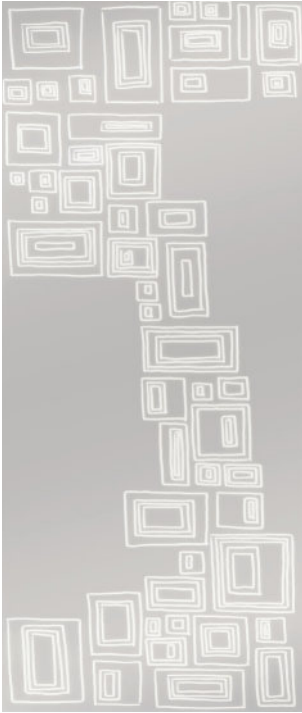


See www.eclisse.co.uk for full range of finishes.

AREE

ON A TRANSPARENT, SATIN, GREY OR BRONZE BASE WITH SANDBLASTED DECORATION

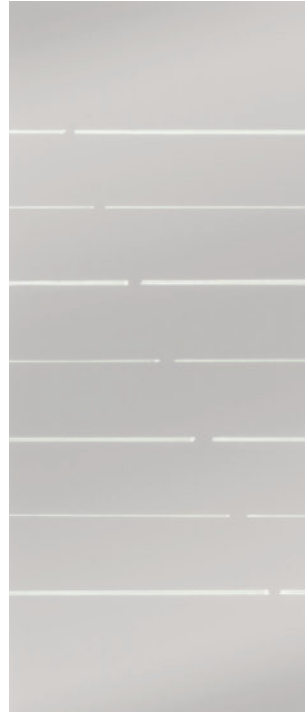
MIRAGE



INFINITO



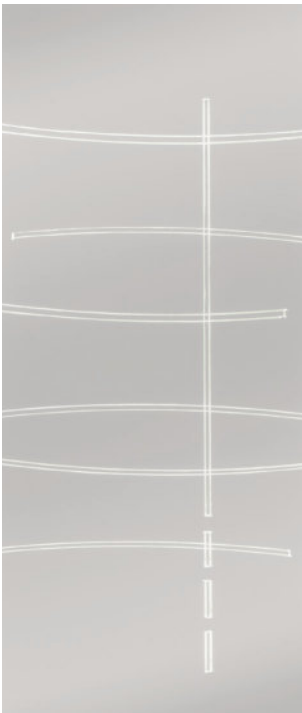
INTERRUZIONE



PULL



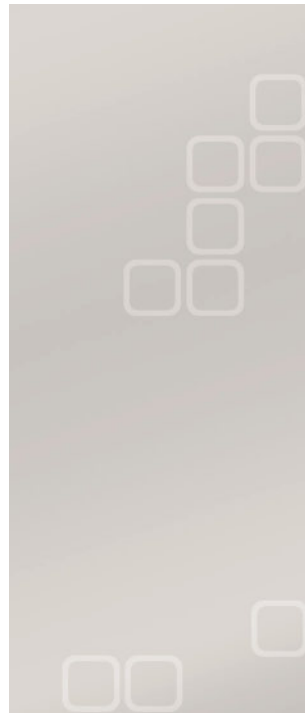
REGOLA



FIBRE



SPACE AGE 2



ACQUA MARINA



Suitable for all systems except for 8 mm Classic Pocket Door Systems.

AREE

ON A TRANSPARENT, SATIN, GREY OR BRONZE BASE WITH SANDBLASTED DECORATION

STAMPE 2



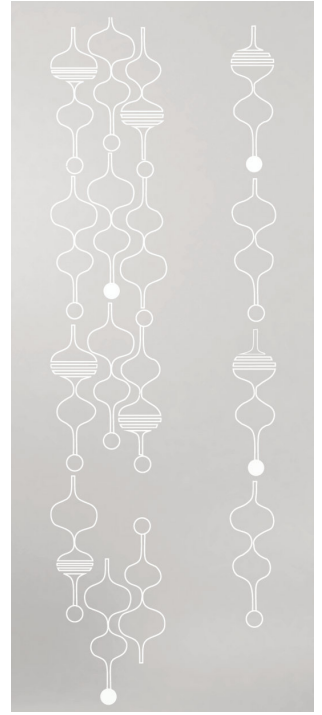
STONE



CORNIRI



KIMI



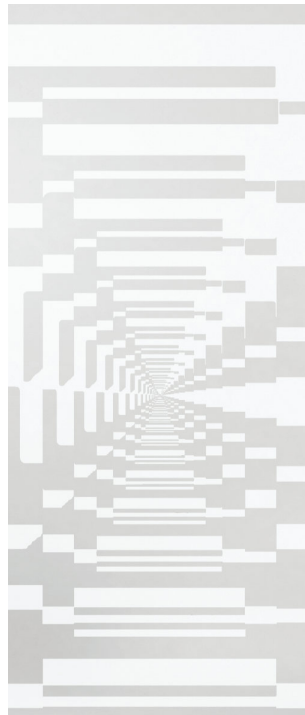
NEMESI



ANOUCHE



ATE



GRAFISMI



See www.eclisse.co.uk for full range of finishes.

FLORES

ON A TRANSPARENT, SATIN, GREY OR BRONZE BASE WITH SANDBLASTED DECORATION

AQUA



OPALE



TROPICI



BOLLE



CANNE AL VENTO



MEDITERRANEO



Suitable for all systems except for 8 mm Classic Pocket Door Systems.

FLORES

ON A TRANSPARENT, SATIN, GREY OR BRONZE BASE WITH SANDBLASTED DECORATION

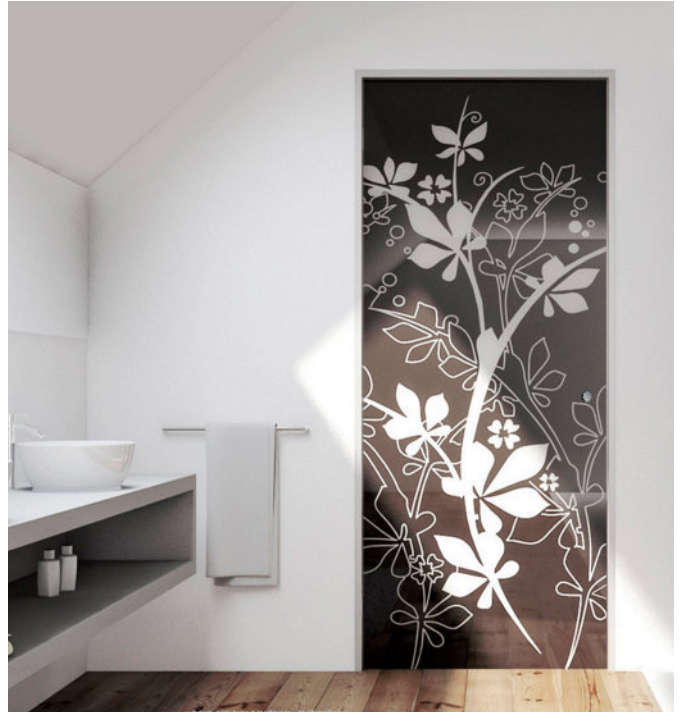
BIRMANIA



PUPA



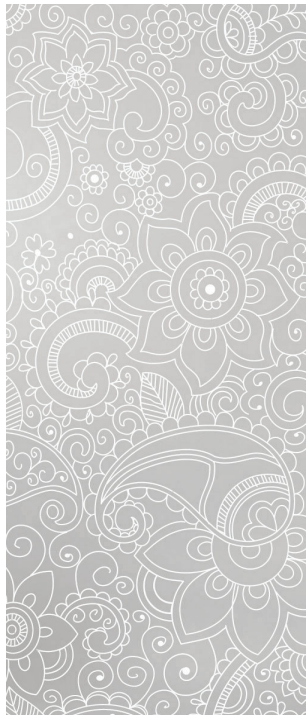
JUNGLE



MAYLEA



BOMBAY



ARAS



PARIS



See www.eclisse.co.uk for full range of finishes.

FLORES

ON A TRANSPARENT, SATIN, GREY OR BRONZE BASE WITH SANDBLASTED DECORATION

HAKA CHA



ROSAPESCO



BLUMA



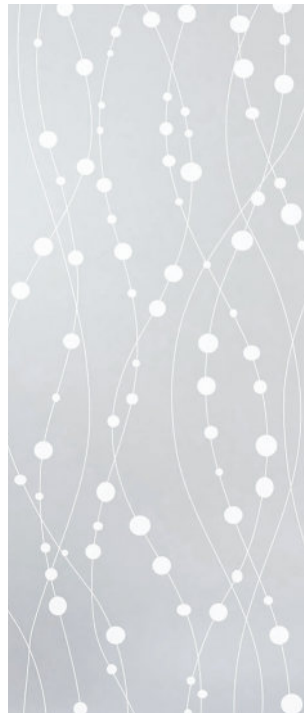
GREEN



IBISCUS 2



CALIDONIA



FARNELL



Suitable for all systems except for 8 mm Classic Pocket Door Systems.

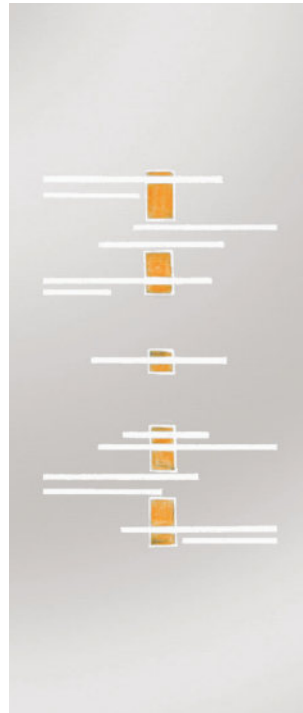
TOZZETTI

ON A TRANSPARENT OR SATIN BASE WITH SANDBLASTED DECORATION - FOR 10 mm GLASS

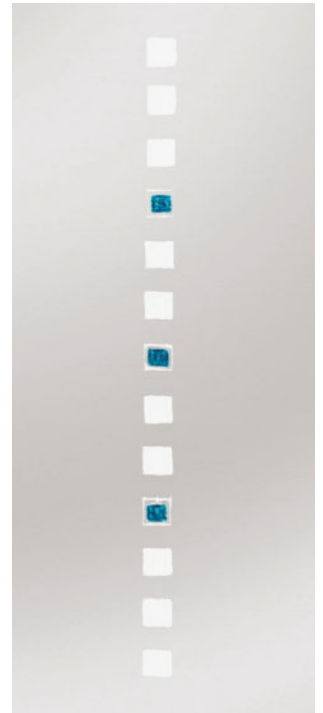
Colourful Murano glass tiles, or "tozzetti", are highly decorative hand-cut glass tiles used to embellish the design further resulting in elegant and individualistic glass door oozing with Italian style.



TRAMONTO



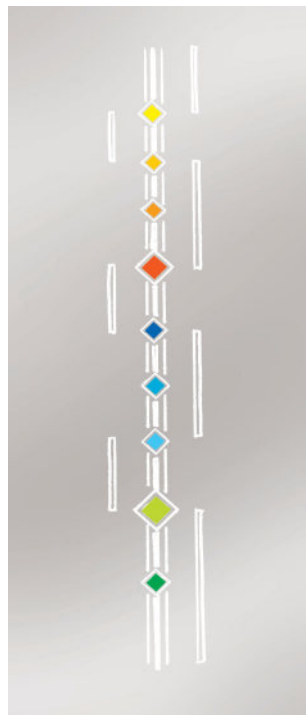
QUADRELLO



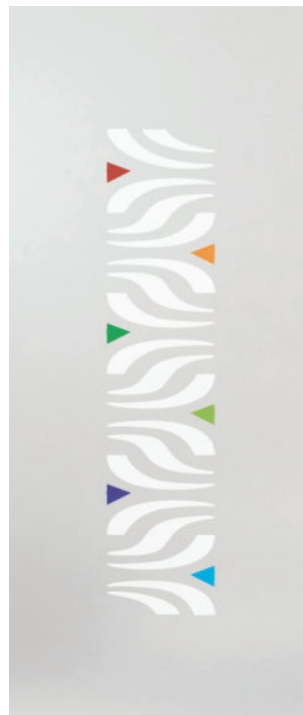
BRIO



CORSIE



ALA



CORNILOLO



Suitable for 10 mm glass doors only. See www.eclisse.co.uk for full range of finishes.

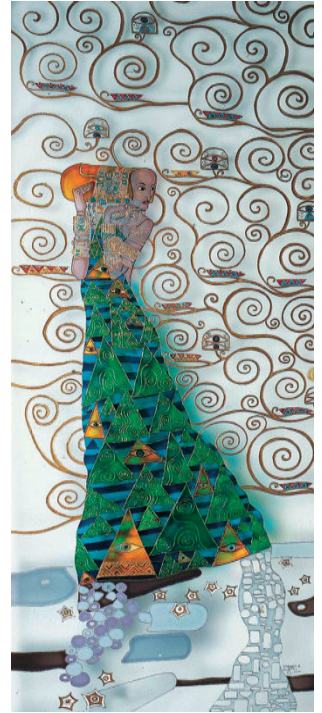
OPERE

ON A TRANSPARENT OR SATIN BASE WITH SANDBLASTED DECORATION - FOR 10 mm GLASS

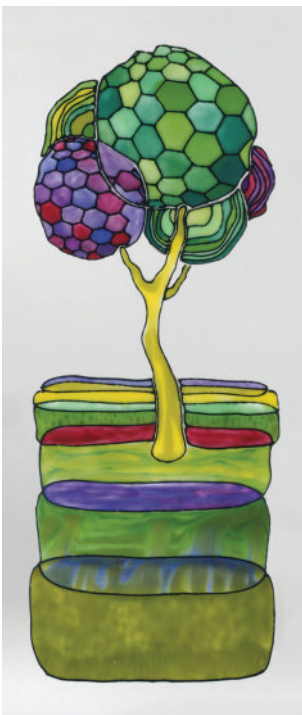
NINFE



DEDICATO A KLIMT



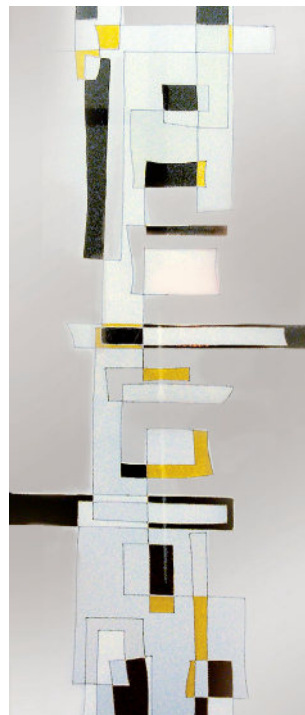
BEIRA



VOLATILE



CITY



CHIOMA



Suitable for 10 mm glass doors only. See www.eclisse.co.uk for full range of finishes.

COLOURS

A RAL COLOUR SPRAYED ON A SHEET OF 10 mm TRANSPARENT GLASS. THE RESULT IS SMOOTH ON ONE SIDE, MATT ON THE THE PAINTED ONE. ALTERNATIVELY TWO SHEETS OF 5 mm TEMPERED GLASS CAN SANDWICH A RAL COLOURED FILM FOR A SMOOTH FINISH ON BOTH SIDES.

WHITE 9010



BEIGE 1015



BLUE 5002



RED 3003



SILVER 9006



GREY 7024



ORANGE 2001



BLACK 9005



See www.eclisse.co.uk for full range of finishes.

COLOURS

A SHEET OF MIRRORED GLASS CAN BE LAMINATED WITH ANOTHER SHEET OF MIRRORED GLASS OR WITH A SHEET OF SOLID COLOURED GLASS, SO YOU CAN HAVE BOTH SIDES MIRRORED OR ONE SIDE MIRRORED AND ONE SIDE COLOURED.

WHITE 8015



AMBER 8109



BLUE 8133



ORANGE 8136



MIRRORED

A SHEET OF MIRRORED GLASS CAN BE LAMINATED WITH ANOTHER SHEET OF MIRRORED GLASS OR WITH A SHEET OF SOLID COLOURED GLASS. SO YOU CAN HAVE BOTH SIDES MIRRORED OR ONE SIDE MIRRORED AND ONE SIDE COLOURED.

MIRRORED



ACCESSORIES



HANDLES AND LOCKS

See our website for the full range of glass handles, bar handles, flush pull handles and locks for glass doors.

On our website you will also be able to see the range of handles that are available free of charge with a 10 mm glass door purchase.

GLASS POMOLO
TRANSPARENT AND SATIN



GLASS HANDLE
TRANSPARENT AND SATIN



BAR HANDLES



FLUSH PULL HANDLES



LOCK
WITH INCORPORATED HANDLE



LOCK
WITH PULL LEVER

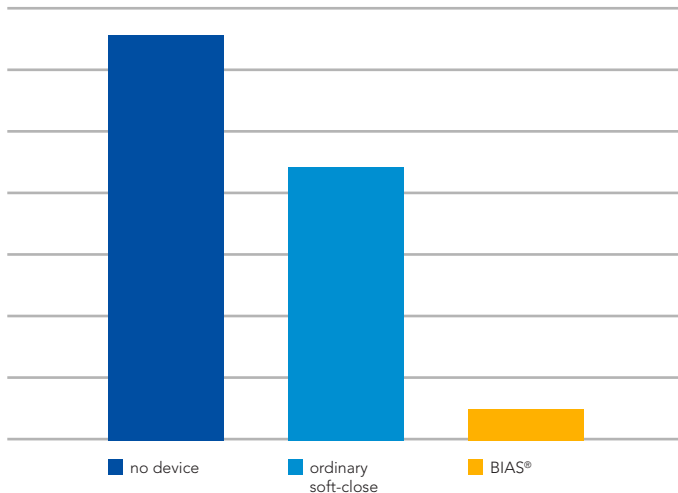


See www.eclisse.co.uk for full range of handles and locks.

SOFT-CLOSE SYSTEMS

ECLISSE BIAS®, Built-In Anti-Slam

SOFT-CLOSE DAMPER FOR SINGLE AND DOUBLE DOORS



- ▶ Invisible from the outside
- ▶ Easy to fit
- ▶ Can be retrofitted
- ▶ For glass or wooden doors above 40 kg, BIAS® will still work but it is not guaranteed that the door will close completely of its own accord.
- ▶ Suitable for doors 686 mm wide and over. Can only be used with glass doors under this if requested at time of glass door order.

Better than an ordinary soft-close, the ECLISSE BIAS® has anti-slam technology.

The BIAS® is not just a soft close but a true ANTI-SLAM device that protects the door from being slammed on fingers by slowing it down towards the close position. Even when it is slammed with a greater than normal force the BIAS will bring the door to a close gently.

Our tests have shown that, unlike an ordinary soft close, using a BIAS® reduces the impact of the door against the door post by 92.6% when the door is slammed with force.



ECLISSE BIAS® DS, Built-In Anti-Slam Double Side

BI-DIRECTIONAL SOFT-CLOSE DAMPER FOR SINGLE AND DOUBLE DOORS



BIAS® DS the bi-directional soft close with anti-slam technology.

Dampens on closing the door and opening the door.

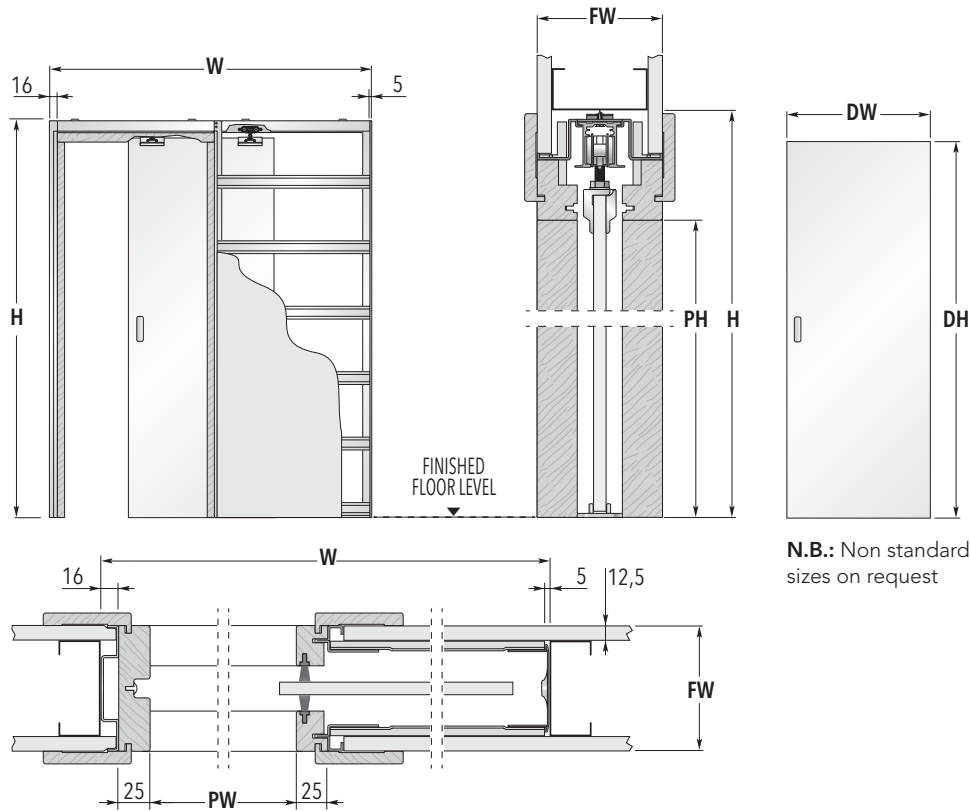
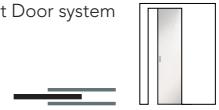
- ▶ Invisible from the outside
- ▶ Easy to fit
- ▶ Can be retrofitted
- ▶ For glass or wooden doors above 40 kg, BIAS® DS will still work but it is not guaranteed that the door will close completely of its own accord.
- ▶ Only for doors with glass door panel 826 mm or wider. Can be used with a 762mm wide door panel if requested at time of glass door order.

TECHNICAL SPECIFICATIONS AND SIZING



CLASSIC GLASS POCKET DOOR SINGLE

Single Sliding Pocket Door system



N.B.: Non standard sizes on request

FRAMES FOR SINGLE DOORS			GLASS DOOR PANEL*	
MAX. PASSAGE SIZE PW x PH	OVERALL DIMENSION W x H	FINISHED WALL FW	DW	DH
600 x 2030	1288 x 2115	100 or 125	626	2040
700 x 2030	1488 x 2115	100 or 125	726	2040
800 x 2030	1688 x 2115	100 or 125	826	2040
900 x 2030	1888 x 2115	100 or 125	926	2040
1000 x 2030	2088 x 2115	100 or 125	1026	2040
585 x 1971	1273 x 2056	100 or 125	2ft. 0in. x 6ft. 6in. (610 x 1981 mm)	
661 x 1971	1449 x 2056	100 or 125	2ft. 3in. x 6ft. 6in. (686 x 1981 mm)	
737 x 1971	1625 x 2056	100 or 125	2ft. 6in. x 6ft. 6in. (762 x 1981 mm)	
813 x 1971	1701 x 2056	100 or 125	2ft. 9in. x 6ft. 6in. (838 x 1981 mm)	
900 x 1971	1888 x 2056	100 or 125	3ft. 0in. x 6ft. 6in. (914 x 1981 mm)	
675 x 1971	1463 x 2056	100 or 125	2ft. 4in. x 6ft. 6in. (711 x 1981 mm)	
775 x 2020	1663 x 2105	100 or 125	2ft. 8in. x 6ft. 8in. (813 x 2032 mm)	
850 x 2020	1838 x 2105	100 or 125	2ft. 10in. x 6ft. 8in. (864 x 2032 mm)	

Dimensions are given in mm



NOTES

- ▶ Supplied with 10 mm glass door fully tempered to the latest European specifications.
- ▶ 8 mm satin finish glass available in 762 x 1981 and 826 x 2040 only.
- ▶ Low iron glass available on request (10 mm only).
- ▶ Satin glass, Sandblasted patterns, Murano glass inserts, coloured glass all available.
- ▶ Available in non standard sizes up to opening 2000 x 2400 mm or 1500 x 2900 mm.
- ▶ Includes full timber lining kit for a professional finish.
- ▶ Install at finished floor level.
- ▶ Plasterboard and final architrave not supplied.
- ▶ When fitting flush pull handles we recommend the stop be regulated so the door protrudes from the pocket to avoid risk to fingers.
- ▶ Should the handle choice allow the door be adjusted to enter the pocket completely we do not accept any liability.

* Nominal size.

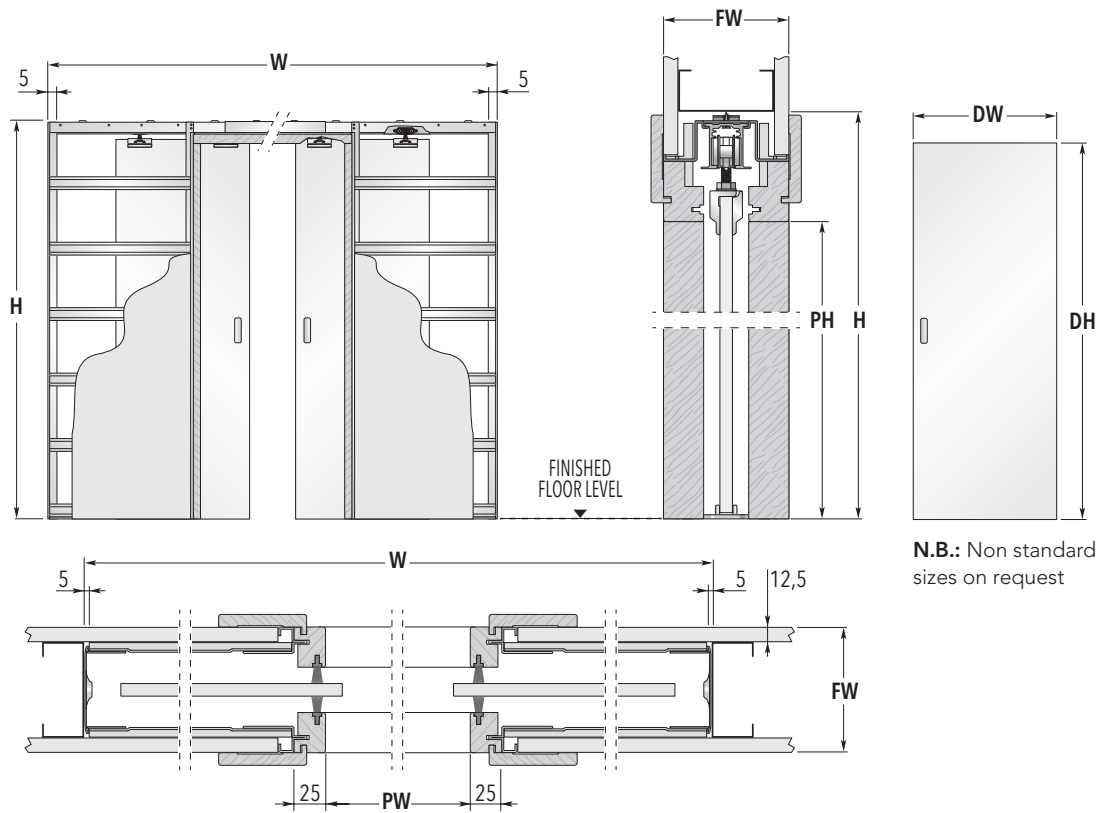


ACCESSORIES

- ▶ **Door Furniture**
Glass door furniture and locks
- ▶ **ECLISSE BIAS®**
Soft Close anti-slam device with 40 kg soft closing
- ▶ **ECLISSE BIAS® DS**
Bi-directional soft close up to 40 kg with anti-slam
- ▶ **E-Motion**
Linear motor open/close

CLASSIC GLASS POCKET DOOR DOUBLE

Double Sliding Pocket Door system



N.B.: Non standard sizes on request

FRAMES FOR DOUBLE DOORS			GLASS DOOR PANEL*	
MAX. PASSAGE SIZE PW x PH	OVERALL DIMENSION W x H	FINISHED WALL FW	DW	DH
1200 x 2030	2494 x 2115	100 or 125	626	2040
1400 x 2030	2894 x 2115	100 or 125	726	2040
1600 x 2030	3294 x 2115	100 or 125	826	2040
1800 x 2030	3694 x 2115	100 or 125	926	2040
2000 x 2030	4094 x 2115	100 or 125	1026	2040
1170 x 1971	2464 x 2056	100 or 125	2ft. 0in. x 6ft. 6in. (610 x 1981 mm)	
1322 x 1971	2816 x 2056	100 or 125	2ft. 3in. x 6ft. 6in. (686 x 1981 mm)	
1474 x 1971	3168 x 2056	100 or 125	2ft. 6in. x 6ft. 6in. (762 x 1981 mm)	
1626 x 1971	3320 x 2056	100 or 125	2ft. 9in. x 6ft. 6in. (838 x 1981 mm)	
1800 x 1971	3694 x 2056	100 or 125	3ft. 0in. x 6ft. 6in. (914 x 1981 mm)	
1350 x 1971	2844 x 2056	100 or 125	2ft. 4in. x 6ft. 6in. (711 x 1981 mm)	
1550 x 2020	3244 x 2105	100 or 125	2ft. 8in. x 6ft. 8in. (813 x 2032 mm)	
1700 x 2020	3594 x 2105	100 or 125	2ft. 10in. x 6ft. 8in. (864 x 2032 mm)	

Dimensions are given in mm



NOTES

- ▶ Supplied with 10 mm glass door fully tempered to the latest European specifications.
- ▶ 8 mm satin finish glass available in 762 x 1981 and 826 x 2040 only.
- ▶ Low iron glass available on request (10 mm only).
- ▶ Satin glass, Sandblasted patterns, Murano glass inserts, coloured glass all available.
- ▶ Available in non standard sizes up to opening 4000 x 2400 mm or 3000 x 2900 mm.
- ▶ Includes full timber lining kit for a professional finish.
- ▶ Install at finished floor level.
- ▶ Plasterboard and final architrave not supplied.
- ▶ When fitting flush pull handles we recommend the stop be regulated so the door protrudes from the pocket to avoid risk to fingers.
- ▶ Should the handle choice allow the door be adjusted to enter the pocket completely we do not accept any liability.

* Nominal size.

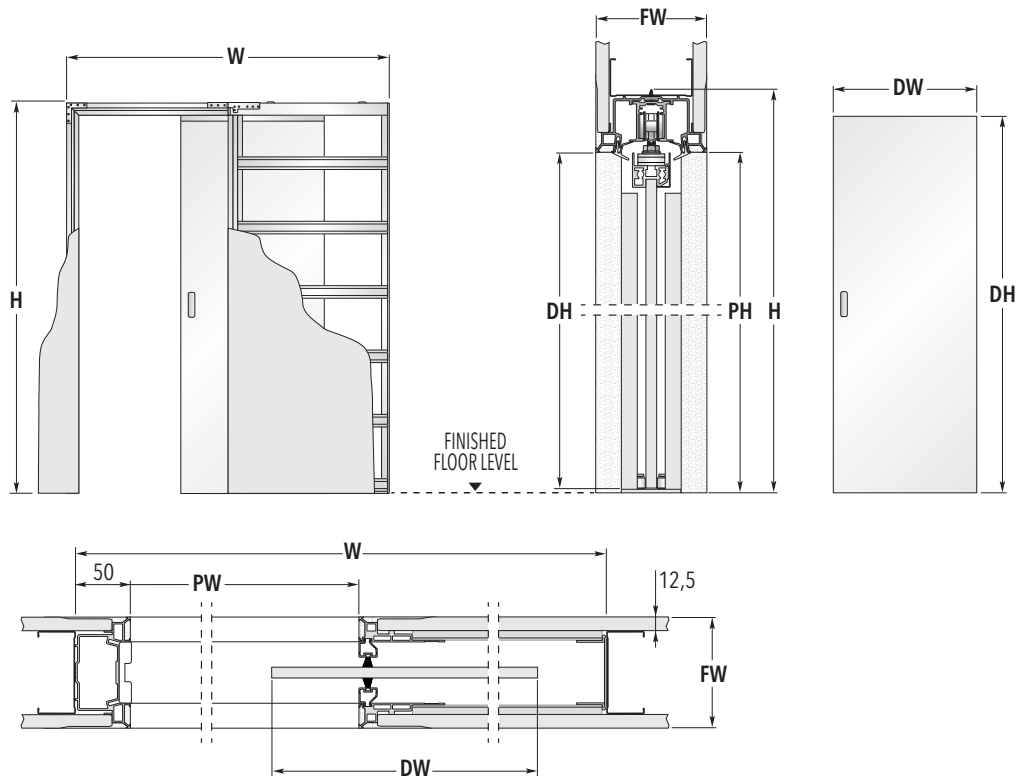


ACCESSORIES

- ▶ **Door Furniture**
Glass door furniture and locks
- ▶ **ECLISSE BIAS®**
Soft Close anti-slam device with 40 kg soft closing
- ▶ **ECLISSE BIAS® DS**
Bi-directional soft close up to 40 kg with anti-slam

SYNTESIS® FLUSH GLASS POCKET DOOR SINGLE

Flush Pocket Door System
no jambs, no architraves



FRAMES FOR SINGLE DOORS			GLASS DOOR PANEL*	
MAX. PASSAGE SIZE	OVERALL DIMENSION	FINISHED WALL	DW	DH
PW x PH	W x H	FW		
600 x 2048	1385 x 2108	100 - 125 - 150	626	2040
700 x 2048	1585 x 2108	100 - 125 - 150	726	2040
800 x 2048	1785 x 2108	100 - 125 - 150	826	2040
900 x 2048	1985 x 2108	100 - 125 - 150	926	2040
1000 x 2048	2185 x 2108	100 - 125 - 150	1026	2040
584 x 1989	1369 x 2049	100 - 125 - 150	2ft. 0in. x 6ft. 6in. (610 x 1981 mm)	
660 x 1989	1545 x 2049	100 - 125 - 150	2ft. 3in. x 6ft. 6in. (686 x 1981 mm)	
736 x 1989	1721 x 2049	100 - 125 - 150	2ft. 6in. x 6ft. 6in. (762 x 1981 mm)	
812 x 1989	1797 x 2049	100 - 125 - 150	2ft. 9in. x 6ft. 6in. (838 x 1981 mm)	
888 x 1989	1973 x 2049	100 - 125 - 150	3ft. 0in. x 6ft. 6in. (914 x 1981 mm)	
675 x 1989	1560 x 2049	100 - 125 - 150	2ft. 4in. x 6ft. 6in. (711 x 1981 mm)	
775 x 2040	1760 x 2100	100 - 125 - 150	2ft. 8in. x 6ft. 8in. (813 x 2032 mm)	
825 x 2040	1910 x 2100	100 - 125 - 150	2ft. 10in. x 6ft. 8in. (864 x 2032 mm)	

Dimensions are given in mm



NOTES

- ▶ Supplied with 10 mm glass doors fully tempered to the latest European specifications.
- ▶ Low iron glass available on request.
- ▶ Satin glass, Sandblasted patterns, Murano glass inserts, coloured glass all available.
- ▶ Available in non standard sizes up to opening 1300 x 2700 mm.
- ▶ Passage sizes above 1000 mm wide and 2150 mm high must be 125 or 150 mm finished wall thickness, these are separate versions and require 2 layers of 12.5 mm plasterboard each side.
- ▶ Install at finished floor level.
- ▶ Plasterboard not supplied.
- ▶ When fitting flush pull handles we recommend the stop be regulated so the door protrudes from the pocket to avoid risk to fingers.
- ▶ Should the handle choice allow the door be adjusted to enter the pocket completely we do not accept any liability.

* Nominal size.

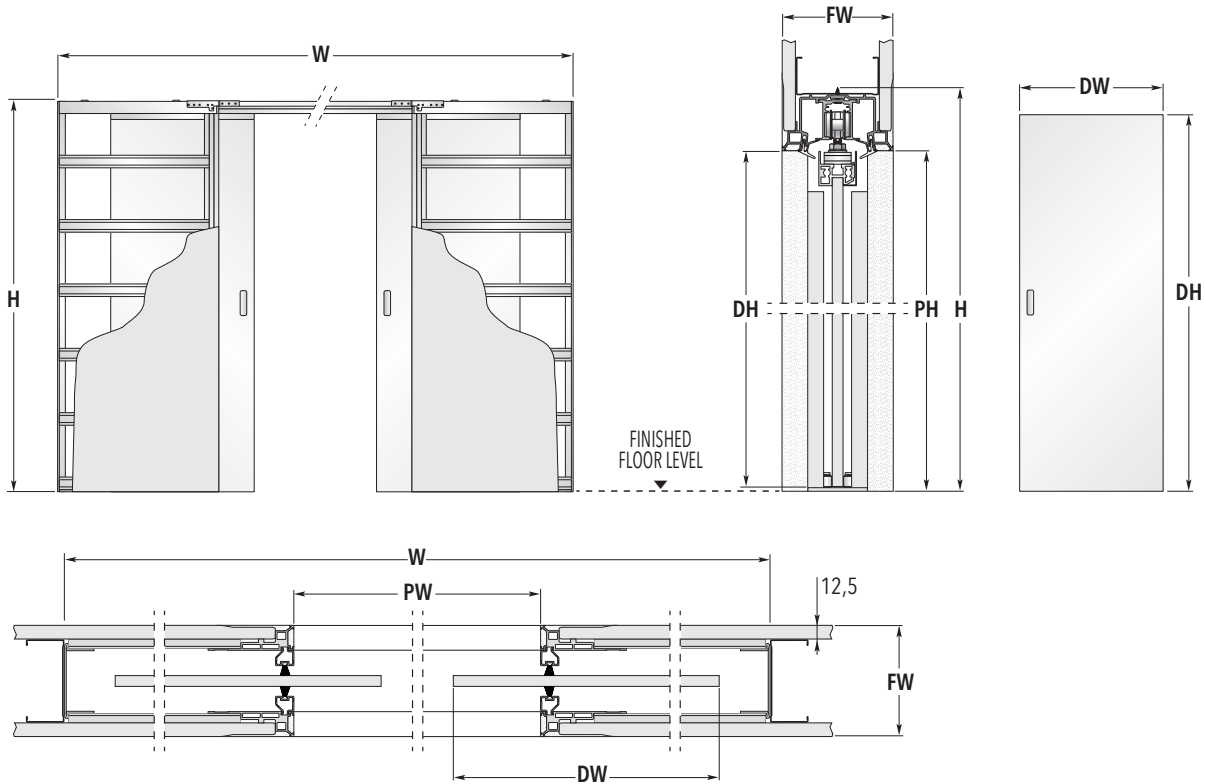


ACCESSORIES

- ▶ **Door Furniture**
Glass door furniture and locks
- ▶ **Flush Skirting Board adaptor**
- ▶ **ECLISSE BIAS®**
Soft Close anti-slam device with 40 kg soft closing
- ▶ **ECLISSE BIAS® DS**
Bi-directional soft close up to 40 kg with anti-slam

SYNTESIS® FLUSH GLASS POCKET DOOR DOUBLE

Flush Pocket Door System
no jambs, no architraves



FRAMES FOR DOUBLE DOORS			GLASS DOOR PANEL*	
MAX. PASSAGE SIZE PW x PH	OVERALL DIMENSION W x H	FINISHED WALL FW	DW	DH
1200 x 2048	2670 x 2108	100 - 125 - 150	626	2040
1400 x 2048	3070 x 2108	100 - 125 - 150	726	2040
1600 x 2048	3470 x 2108	100 - 125 - 150	826	2040
1800 x 2048	3870 x 2108	100 - 125 - 150	926	2040
2000 x 2048	4270 x 2108	100 - 125 - 150	1026	2040
1168 x 1989	2638 x 2049	100 - 125 - 150	2ft. 0in. x 6ft. 6in. (610 x 1981 mm)	
1320 x 1989	2990 x 2049	100 - 125 - 150	2ft. 3in. x 6ft. 6in. (686 x 1981 mm)	
1472 x 1989	3342 x 2049	100 - 125 - 150	2ft. 6in. x 6ft. 6in. (762 x 1981 mm)	
1624 x 1989	3494 x 2049	100 - 125 - 150	2ft. 9in. x 6ft. 6in. (838 x 1981 mm)	
1776 x 1989	3846 x 2049	100 - 125 - 150	3ft. 0in. x 6ft. 6in. (914 x 1981 mm)	
1350 x 1989	3020 x 2049	100 - 125 - 150	2ft. 4in. x 6ft. 6in. (711 x 1981 mm)	
1550 x 2040	3420 x 2100	100 - 125 - 150	2ft. 8in. x 6ft. 8in. (813 x 2032 mm)	
1650 x 2040	3720 x 2100	100 - 125 - 150	2ft. 10in. x 6ft. 8in. (864 x 2032 mm)	

Dimensions are given in mm



NOTES

- ▶ Supplied with 10 mm glass doors fully tempered to the latest European specifications.
- ▶ Low iron glass available on request.
- ▶ Satin glass, Sandblasted patterns, Murano glass inserts, coloured glass all available.
- ▶ Available in non standard sizes up to opening 2600 x 2700 mm.
- ▶ Passage sizes above 2000 mm wide and 2150 mm high must be 125 or 150 mm finished wall thickness, these are separate versions and require 2 layers of 12.5 mm plasterboard each side.
- ▶ Install at finished floor level.
- ▶ Plasterboard not supplied.
- ▶ When fitting flush pull handles we recommend the stop be regulated so the door protrudes from the pocket to avoid risk to fingers.
- ▶ Should the handle choice allow the door be adjusted to enter the pocket completely we do not accept any liability.

* Nominal size.

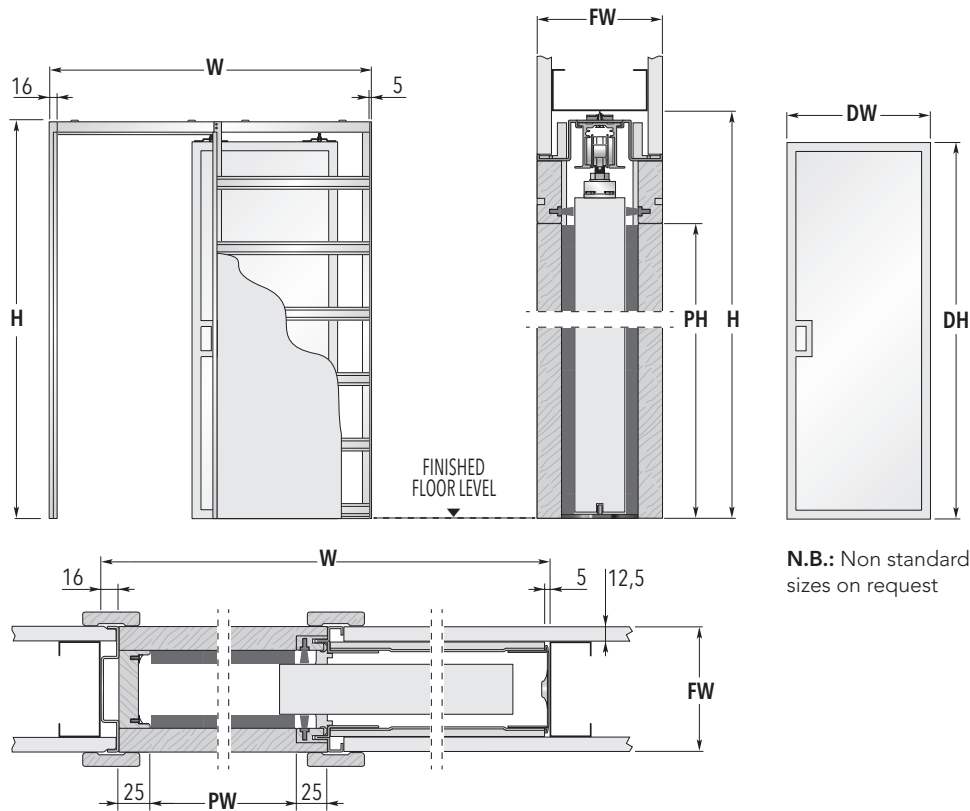
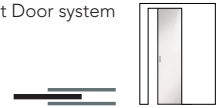


ACCESSORIES

- ▶ **Door Furniture**
Glass door furniture and locks
- ▶ **Flush Skirting Board adaptor**
- ▶ **ECLISSE BIAS®**
Soft Close anti-slam device with 40 kg soft closing
- ▶ **ECLISSE BIAS® DS**
Bi-directional soft close up to 40 kg with anti-slam

ALUMINIUM FRAMED CLASSIC GLASS POCKET DOOR

Single Sliding Pocket Door system



N.B.: Non standard sizes on request

FRAMES FOR SINGLE DOORS			DOOR PANEL UK*	
MAX. PASSAGE SIZE PW x PH	OVERALL DIMENSION W x H	FINISHED WALL FW	DW	DH
610 x 2049	1288 x 2115	100 or 125	624	2045
710 x 2049	1488 x 2115	100 or 125	724	2045
810 x 2049	1688 x 2115	100 or 125	824	2045
910 x 2049	1888 x 2115	100 or 125	924	2045
1010 x 2049	2088 x 2115	100 or 125	1024	2045
595 x 1990	1273 x 2061	100 or 125	609	1986
671 x 1990	1449 x 2061	100 or 125	685	1986
747 x 1990	1625 x 2061	100 or 125	761	1986
823 x 1990	1701 x 2061	100 or 125	837	1986
910 x 1990	1888 x 2061	100 or 125	924	1986
685 x 1990	1463 x 2061	100 or 125	699	1986
785 x 2039	1663 x 2105	100 or 125	799	2035
860 x 2039	1838 x 2105	100 or 125	874	2035

Dimensions are given in mm



NOTES

- ▶ Supplied with Aluminium Framed Glass Door with 6 mm glass tempered to European standard UNI EN 12150.
 - ▶ The frame has an anodised aluminium finish.
 - ▶ The aluminium frame and therefore the door panel is 40 mm thick.
 - ▶ The frame profile uprights and upper crosspiece 40 x 15 mm and the lower crosspiece is 40 x 40 mm.
 - ▶ Door supplied assembled, complete with brackets for the pocket door runners.
 - ▶ Low iron glass available on request.
 - ▶ Transparent, satin, milk white, bronze, grey, sandblasted patterns.
 - ▶ Available in non standard sizes up to opening 1200 x 2700 mm.
 - ▶ Install at finished floor level.
 - ▶ Plasterboard not supplied. Includes full timber lining kit for a professional finish.
- * Nominal size.

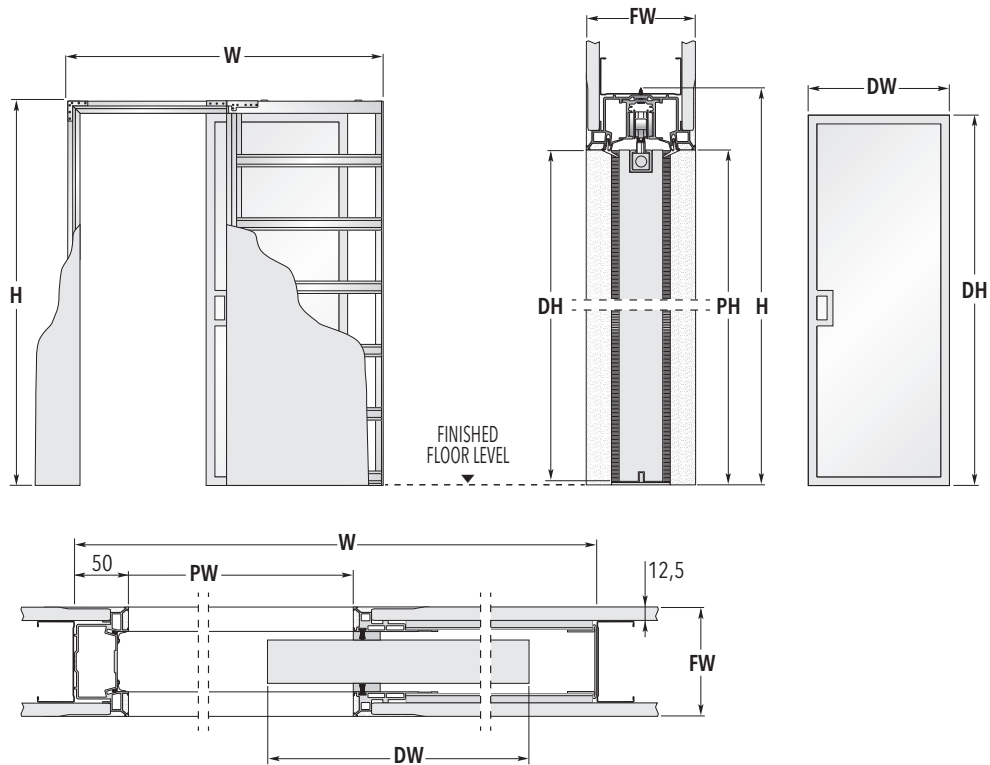


ACCESSORIES

- ▶ **ECLISSE BIAS®**
Soft Close anti-slam device with 40 kg soft closing
- ▶ **ECLISSE BIAS® DS**
Bi-directional soft close up to 40 kg with anti-slam
- ▶ **E-Motion**
Linear motor open/close

ALUMINIUM FRAMED SYNTESIS® FLUSH GLASS POCKET DOOR

Flush Pocket Door System
no jambs, no architraves



FRAMES FOR SINGLE DOORS			DOOR PANEL UK*	
MAX. PASSAGE SIZE	OVERALL DIMENSION	FINISHED WALL	DW	DH
PW x PH	W x H	FW		
600 x 2048	1385 x 2108	100 - 125 - 150	626	2040
700 x 2048	1585 x 2108	100 - 125 - 150	726	2040
800 x 2048	1785 x 2108	100 - 125 - 150	826	2040
900 x 2048	1985 x 2108	100 - 125 - 150	926	2040
1000 x 2048	2185 x 2108	100 - 125 - 150	1026	2040
584 x 1989	1369 x 2049	100 - 125 - 150	2ft. 0in. x 6ft. 6in. (610 x 1981 mm)	
660 x 1989	1545 x 2049	100 - 125 - 150	2ft. 3in. x 6ft. 6in. (686 x 1981 mm)	
736 x 1989	1721 x 2049	100 - 125 - 150	2ft. 6in. x 6ft. 6in. (762 x 1981 mm)	
812 x 1989	1797 x 2049	100 - 125 - 150	2ft. 9in. x 6ft. 6in. (838 x 1981 mm)	
888 x 1989	1973 x 2049	100 - 125 - 150	3ft. 0in. x 6ft. 6in. (914 x 1981 mm)	
675 x 1989	1560 x 2049	100 - 125 - 150	2ft. 4in. x 6ft. 6in. (711 x 1981 mm)	
775 x 2040	1760 x 2100	100 - 125 - 150	2ft. 8in. x 6ft. 8in. (813 x 2032 mm)	
825 x 2040	1910 x 2100	100 - 125 - 150	2ft. 10in. x 6ft. 8in. (864 x 2032 mm)	

Dimensions are given in mm



NOTES

- ▶ Supplied with Aluminium Framed Glass Door with 6 mm glass tempered to European standard UNI EN 12150.
- ▶ The frame has an anodised aluminium finish.
- ▶ The aluminium frame and therefore the door panel is 40 mm thick.
- ▶ The frame profile uprights and upper crosspiece 40 x 15 mm and the lower crosspiece is 40 x 40 mm.
- ▶ The door is supplied assembled, complete with brackets for the pocket door runners.
- ▶ Low iron glass available on request.
- ▶ Transparent, satin, milk white, bronze, grey, sandblasted patterns.
- ▶ Available in non standard sizes up to opening 1200 x 2700 mm.
- ▶ Install at finished floor level.
- ▶ Plasterboard not supplied.
- * Nominal size.



ACCESSORIES

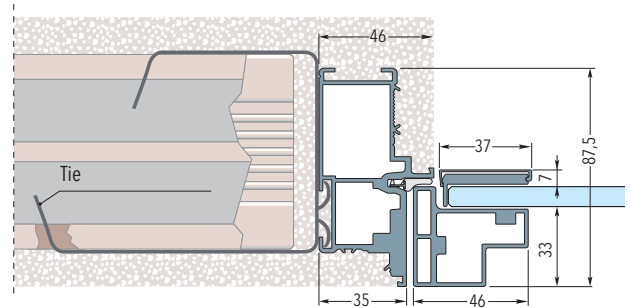
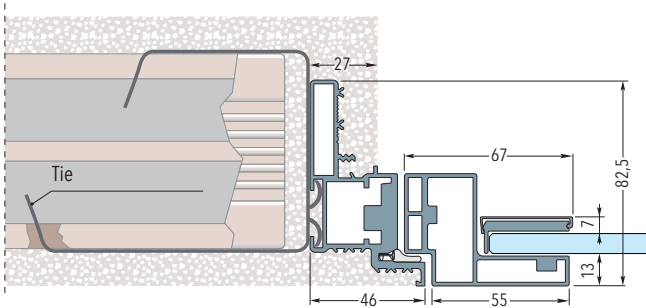
- ▶ **Flush Skirting Board adaptor**
- ▶ **ECLISSE BIAS®**
Soft Close anti-slam device with 40 kg soft closing
- ▶ **ECLISSE BIAS® DS**
Bi-directional soft close up to 40 kg with anti-slam

SYNTESIS® FLUSH GLASS HINGED DOOR

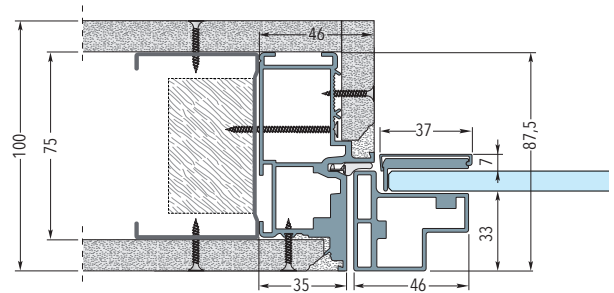
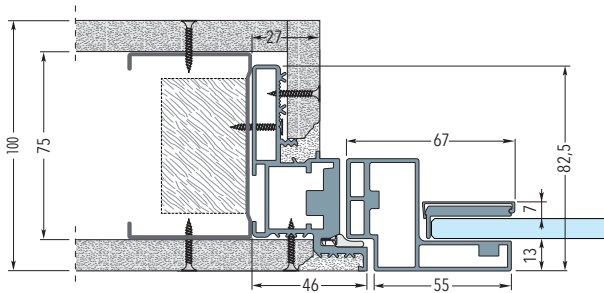
PUSH DOOR

PULL DOOR

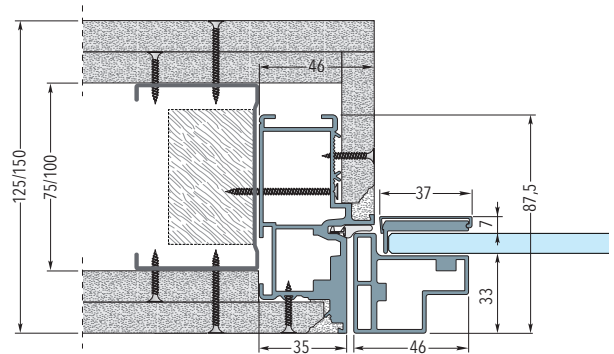
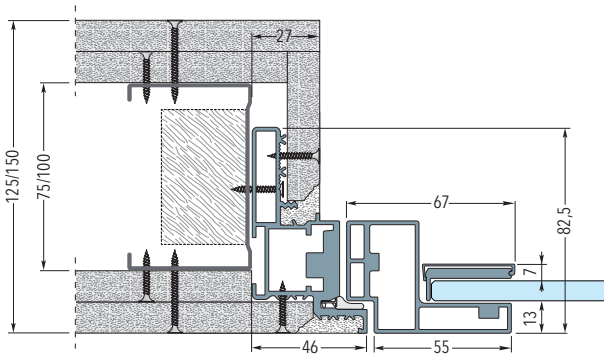
Solid wall



Stud wall with one layer of plasterboard - Finished wall thickness 100 mm



Stud wall with two layers of plasterboard - Finished wall thickness 125/150 mm



The frame is designed for use with solid or stud walls.
For solid walls use the 6 adjustable ties to locate the frame. For stud walls screw into the stud through the specifically designed holes.



NOTES

- ▶ Supplied with 8 mm glass door fully tempered to the latest European specifications.
- ▶ Transparent, satin, transparent grey, satin grey, transparent bronze, satin bronze or sandblasted patterns. Low iron glass available on request.
- ▶ Available in non standard sizes up to opening 1650 x 2700 mm.
- ▶ Glass doors recessed by different amount depending on whether they are push or pull versions (see drawing).
- ▶ See www.eclisse.co.uk for all stud size options.
- ▶ Install at finished floor level.
- ▶ Comes with seals, magnetic door latch, strike plate, vertical anodised trim.
- ▶ Handle not included.
- ▶ Plasterboard not supplied.

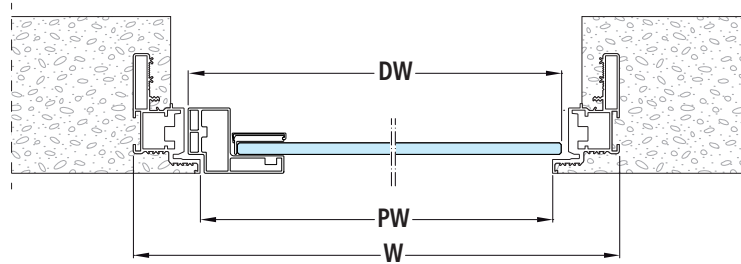
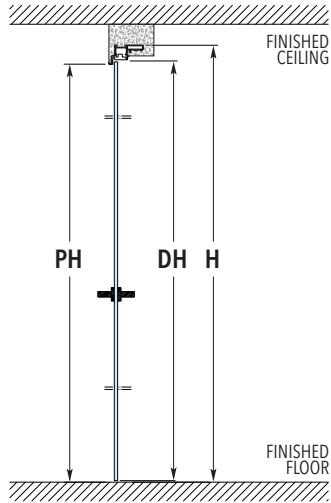


ACCESSORIES

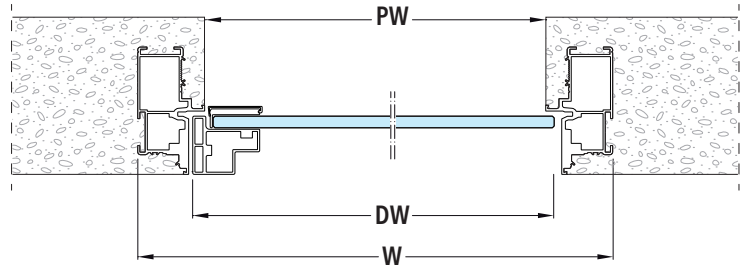
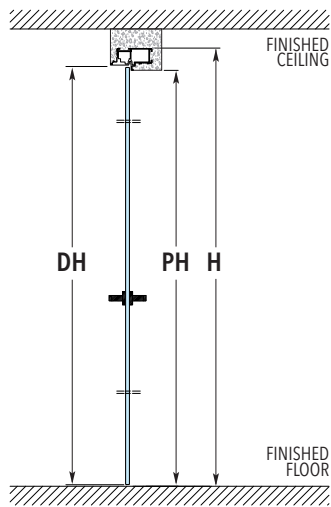
- ▶ **Door Furniture**
Handles

SYNTHESIS® FLUSH GLASS HINGED DOOR

PUSH DOOR



PULL DOOR



FRAMES FOR SINGLE HINGED DOORS

GLASS DOOR PANEL

MAX. PASSAGE SIZE PW x PH	OVERALL DIMENSION W x H	DW	DH
610 x 2036	702 x 2082	624	2034
710 x 2036	802 x 2082	724	2034
810 x 2036	902 x 2082	824	2034
910 x 2036	1002 x 2082	924	2034
1010 x 2036	1102 x 2082	1024	2034
594 x 1977	686 x 2023	608	1975
670 x 1977	762 x 2023	684	1975
746 x 1977	838 x 2023	760	1975
822 x 1977	914 x 2023	836	1975
898 x 1977	990 x 2023	912	1975
695 x 1977	787 x 2023	709	1975
797 x 2028	889 x 2074	811	2026
848 x 2028	940 x 2074	862	2026

Dimensions are given in mm

© ECLISSE, all rights reserved.

The use, filing and total or partial reproduction, using any mechanical or electronic means, of texts, drawings and pictures contained in this publication is strictly prohibited, unless specifically approved in writing by ECLISSE.

All pictures and drawings are for illustrative purposes only. ECLISSE s.r.l. reserves the right to make changes in order to improve the product specifications without notice. We may change the content of this catalogue, so if you have any queries related to the products you can contact our call center. ECLISSE refuses any responsibility for misprints, clerical errors or for any other reason.



ECLISSE UK - Richmond House 2 - Occupation Lane - Gonerby Moor (nr. Grantham) NG32 2BP
Tel 0845 4811977 - Fax 01476 560951 - Email: info@eclisse.co.uk - eclisse.co.uk

Find us at:

